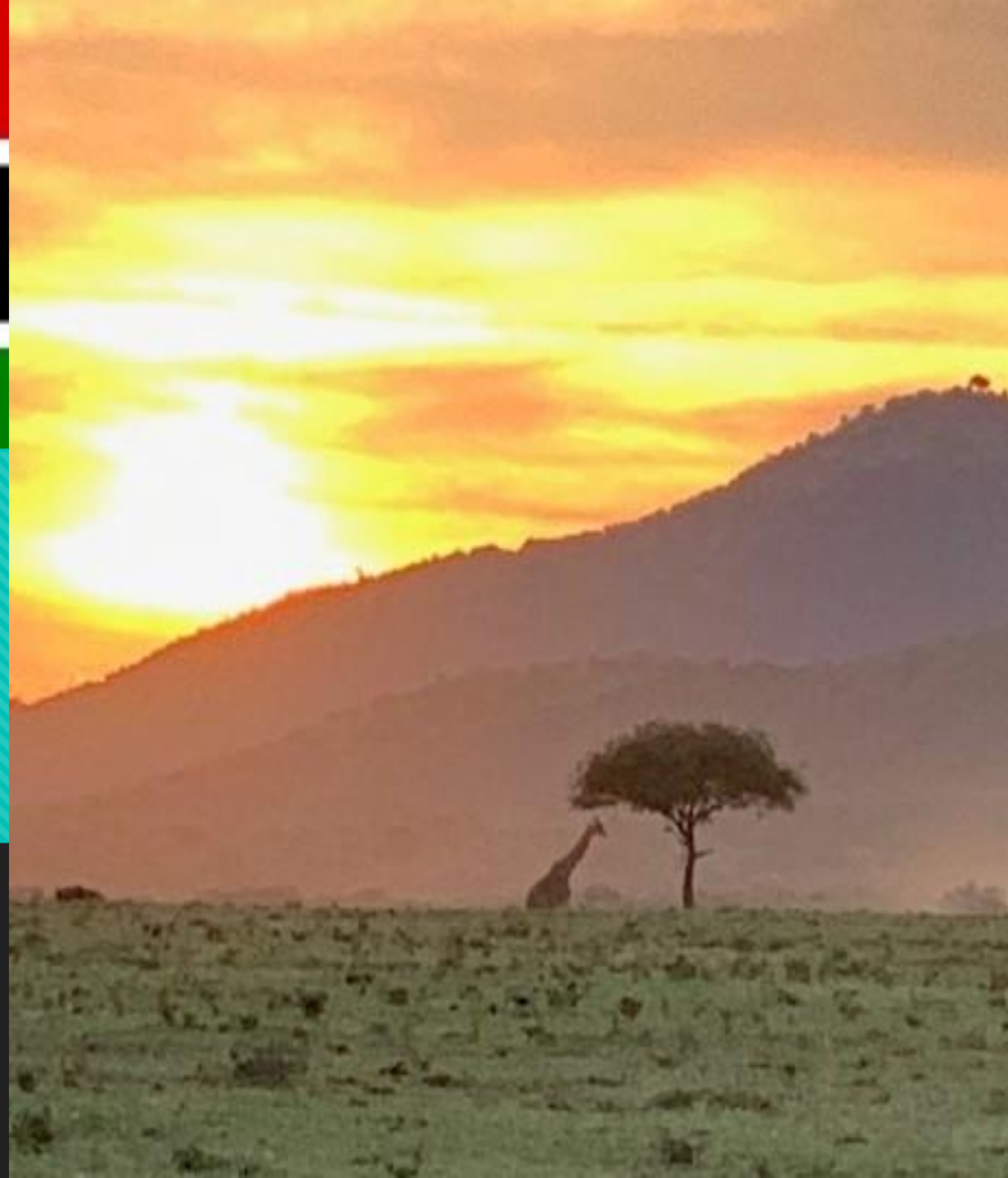




Kenya Mission 2020

Christ Church



Friday, July 31 – Tuesday, August 11



From Dulles Airport to Jomo Kenyatta - Nairobi

Cost

- \$3,200 (tax-deductible)
- Inclusive of flights, hotels, in-country transport, visa, insurance, **all meals**, and full-day safari
- \$100 non-refundable deposit due at registration



Requirements

A healthcare worker, a middle-aged man with glasses and a blue shirt, is using a handheld infrared thermometer to check the forehead of a patient. The patient is a Black man with short hair, wearing a purple shirt and a green and white checkered scarf. The background is a simple, light-colored wall with a window showing some greenery outside.

Passport valid through February 2021

Medical Pills: Malaria, Ciprofloxacin

Vaccination: Yellow Fever

Medical Suggested: Hep A, Tetanus,
Typhoid



Savelberg Retreat Center - Nairobi



Team Picture 2019 –
Savelberg Retreat Center

Flight to Nairobi

Depart IAD – 7/31 at 11:00am on ET 501

Arrive ADD – 8/1 at 7:15am (Layover one hour)

Depart ADD – 8/1 at 8:15am on ET 318

Arrive NBO – 8/1 at 10:25am



Return Flight to Dulles

Depart NBO – 8/10 at 7:15pm on ET 307

Arrive ADD – 8/10 at 9:25pm (Layover 1hr 20min)

Depart ADD – 8/10 at 10:45pm on ET 500

Arrive IAD – 8/11 at 8:40am





Borabu County Inn – Nyamira



Our School
Hope Educational Center

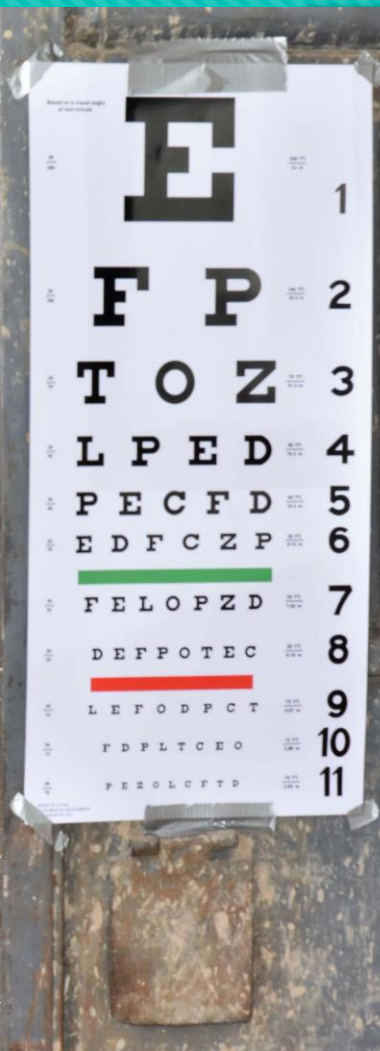


Second Floor Slab



Construction

Medical





Sewing/Uniform Repair



Camp Hope





Computer Lab



Child Sponsorship



Feeding the kids



Normal Mission Day

- 7:00am Breakfast
- 8:00am Drive to Hope School
- 9:00am Mission
- Noon Lunch (provided)
- 3:30pm Pack up
- 4:15pm Drive to Borabu
- 6:30pm Dinner
- 7:30pm Large Group Time
- 8:30pm Small Group Time
- 9:00pm Relax, Visit, Sleep

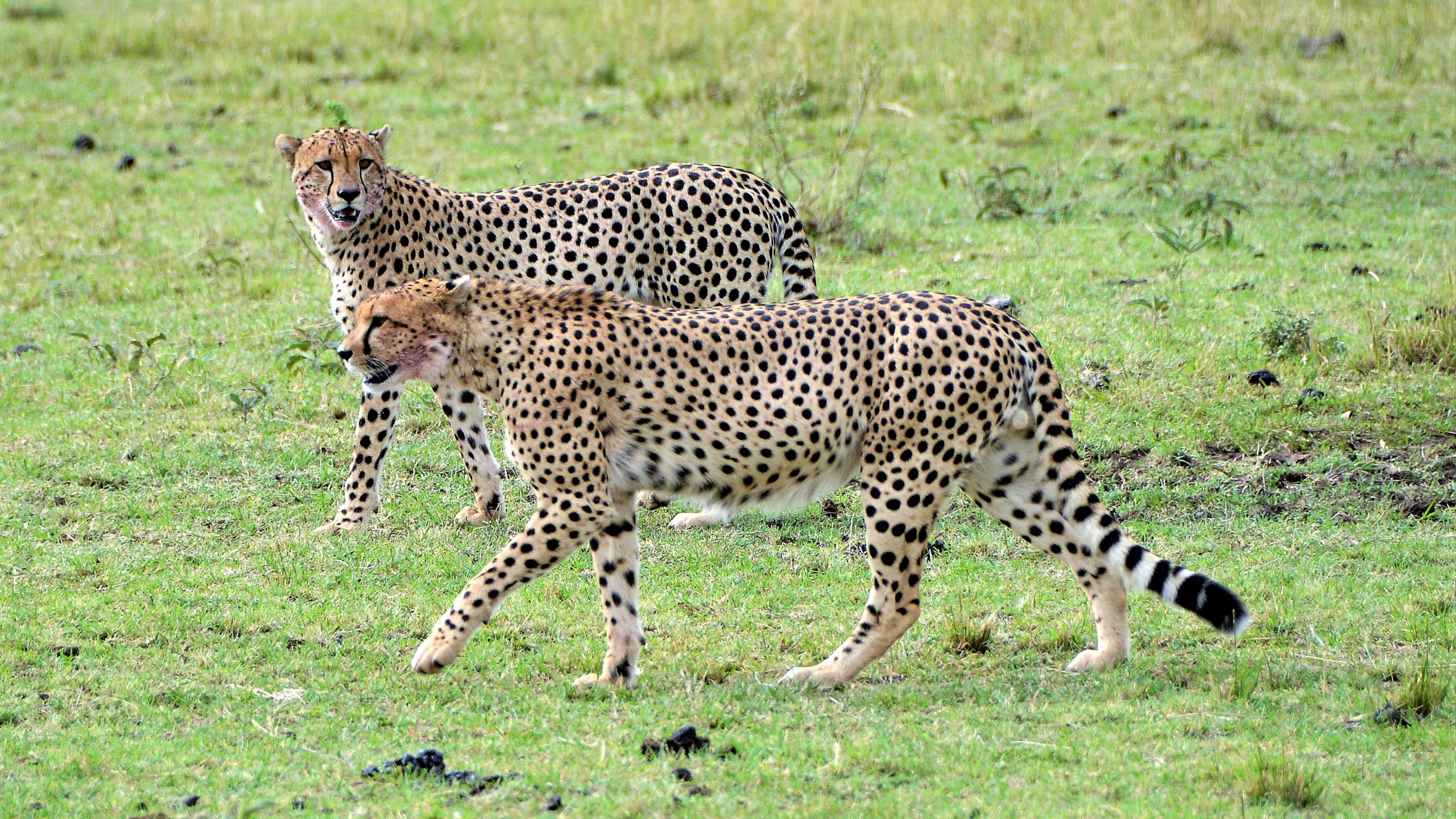


**Masai Mara
Manyatta Tented Camp**











Clothing

- **Flight:** Comfortable travel clothes & shoes
- **Mission:** Long pants, polo shirts, T-Shirts or long sleeve shirts, hat, sunscreen, hiking boots
- **Safari:** Short pants OK (knee)
- **Laundry:** Possible at Borabu Country Inn

Luggage

Two bags + carry on (total)

One bag is personal (50lbs)

One bag is mission (50lbs)

Mission bag to be left at in Kenya (if possible)

Personal Hygiene

One roll of toilet paper

Shampoo

Hand Sanitizer

Wet Wipes

Hand Towel/Wash
Cloth

Sunscreen Lip Balm

Sunscreen

Deet Bug Spray

Communication

- Personal Phone – check with your provider
- WIFI – very spotty & extremely slow at hotel
- Team will send an email at the end of each day

Money

- I will exchange money for the team on the day of our arrival and again during the week before the safari.
- I suggest \$200 in spending money unless you want LOTS of souvenirs (Two Stops)
- Credit Cards rarely accepted

240 volts

**Type G
British Plug**



